

# Das Rheingold

Le Rhin



Les filles du Rhin



La servitude



L'or



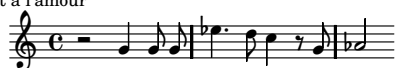
Adoration de l'or



La puissance de l'anneau



Renoncement à l'amour



L'anneau



Le Walhalla



Salut au Walhalla



Le traité



La fascination de l'amour



Freia - La fuite



Les géants



Convention avec les géants



Les pommes d'or



Loge



## Le charme des flammes

Musical score for 'Le charme des flammes' in 2/4 time, key of D major. The score consists of two staves: a bass staff and a treble staff. The bass staff features a melodic line with eighth and sixteenth notes, while the treble staff provides harmonic support with chords and some melodic fragments.

## Le regret de l'amour

Musical score for 'Le regret de l'amour' in 3/4 time, key of D major. The score is written on a single bass staff, featuring a simple melodic line with quarter and eighth notes.

## La forge

Musical score for 'La forge' in 9/8 time, key of B-flat major. The score is written on a single treble staff, featuring a rhythmic melody with eighth and sixteenth notes.

## Le pouvoir du casque

Musical score for 'Le pouvoir du casque' in 2/4 time, key of B-flat major. The score is written on a single treble staff, featuring a complex melodic line with many accidentals and slurs.

## La réflexion

Musical score for 'La réflexion' in 2/4 time, key of B-flat major. The score is written on a single bass staff, featuring a series of chords and some melodic fragments.

## La puissance d'Alberich

Musical score for 'La puissance d'Alberich' in 3/4 time, key of B-flat major. The score is written on a single bass staff, featuring a series of chords. Dynamics markings *f > p* and *f > p* are present below the staff.

## L'amoncellement du trésor

Musical score for 'L'amoncellement du trésor' in 3/4 time, key of D major. The score consists of two staves: a treble staff and a bass staff. The treble staff features a melodic line with many triplets, indicated by '3' above the notes. The bass staff provides harmonic support.

## Cri de triomphe du Nibelung

Musical score for 'Cri de triomphe du Nibelung' in 3/4 time, key of D major. The score is written on a single treble staff, featuring a melodic line with eighth and sixteenth notes.

## Le dragon

Musical score for 'Le dragon' in common time, key of D major. The score is written on a single bass staff, featuring a melodic line with eighth and sixteenth notes. Dynamics markings *p* are present below the staff.

## Travail de destruction des Nibelungs

Musical score for 'Travail de destruction des Nibelungs' in 12/8 time, key of D major. The score is written on a single bass staff, featuring a complex melodic line with many accidentals and slurs. A '5' is written above the first few notes.

## Malédiction de l'anneau

Musical score for 'Malédiction de l'anneau' in common time, key of D major. The score is written on a single bass staff, featuring a melodic line with eighth and sixteenth notes.

## Les nornes

Musical score for 'Les nornes' in common time, key of D major. The score is written on a single bass staff, featuring a melodic line with eighth and sixteenth notes.

## Le déclin des dieux

Musical score for 'Le déclin des dieux' in common time, key of D major. The score is written on a single treble staff, featuring a melodic line with eighth and sixteenth notes.

## Incantation du tonnerre

Musical score for 'Incantation du tonnerre' in common time, key of B-flat major. The score is written on a single bass staff, featuring a melodic line with eighth and sixteenth notes.

## L'arc en ciel

Musical score for 'L'arc en ciel' in 3/4 time, key of B-flat major. The score is written on a single bass staff, featuring a melodic line with eighth and sixteenth notes.

## L'épée

Musical score for 'L'épée' in common time, key of D major. The score is written on a single treble staff, featuring a melodic line with eighth and sixteenth notes.

# Die Walküre

La tempête



Lassitude de Siegmund



La compassion



L'amour



La race des Wælsungs



Hunding



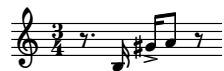
L'héroïsme des Wælsungs



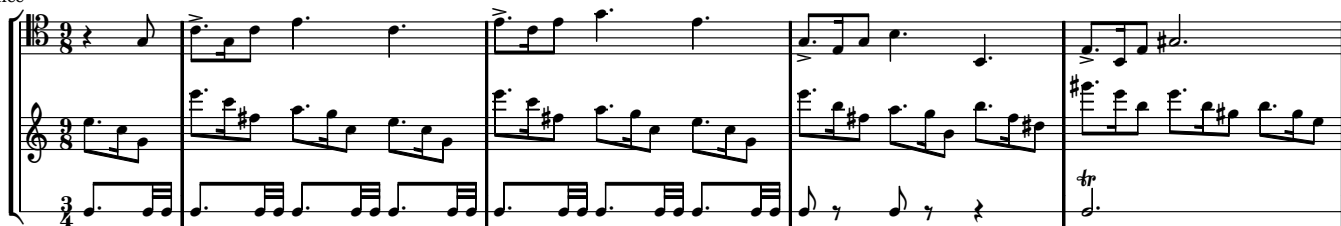
Hymne au printemps



La volupté



La chevauchée



Cri d'appel des Walkyries



Le courroux de Wotan



Détresse des dieux



La poursuite



Le sort



La mort



## Siegfried gardien de l'épée



## La rédemption par l'amour



## Soumission de Brünnhilde



## L'annonce d'une nouvelle vie



## Le sommeil éternel



## Le sommeil de Brünnhilde



## Chant d'adieu de Wotan



# Siegfried

Appel du fils des bois



L'amour de la vie



L'amour filial



Le désir de voyager



Wotan errant



La puissance divine



Mime Rampant



La fonte de l'acier



Fafner



La vengeance



L'oiseau



L'héritage du monde



Salut au monde



Salut à l'amour



Enthousiasme de l'amour



La paix



Siegfried trésor du monde



La décision d'aimer



# Götterdämmerung

Brünnhilde



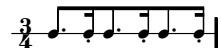
L'amour héroïque



Hagen



Gibichungen



Amitié perfide de Hagen



Trahison par la magie



Bienvenue de Gutrune



Justice de l'expiation



Le meurtre



Appel au mariage

